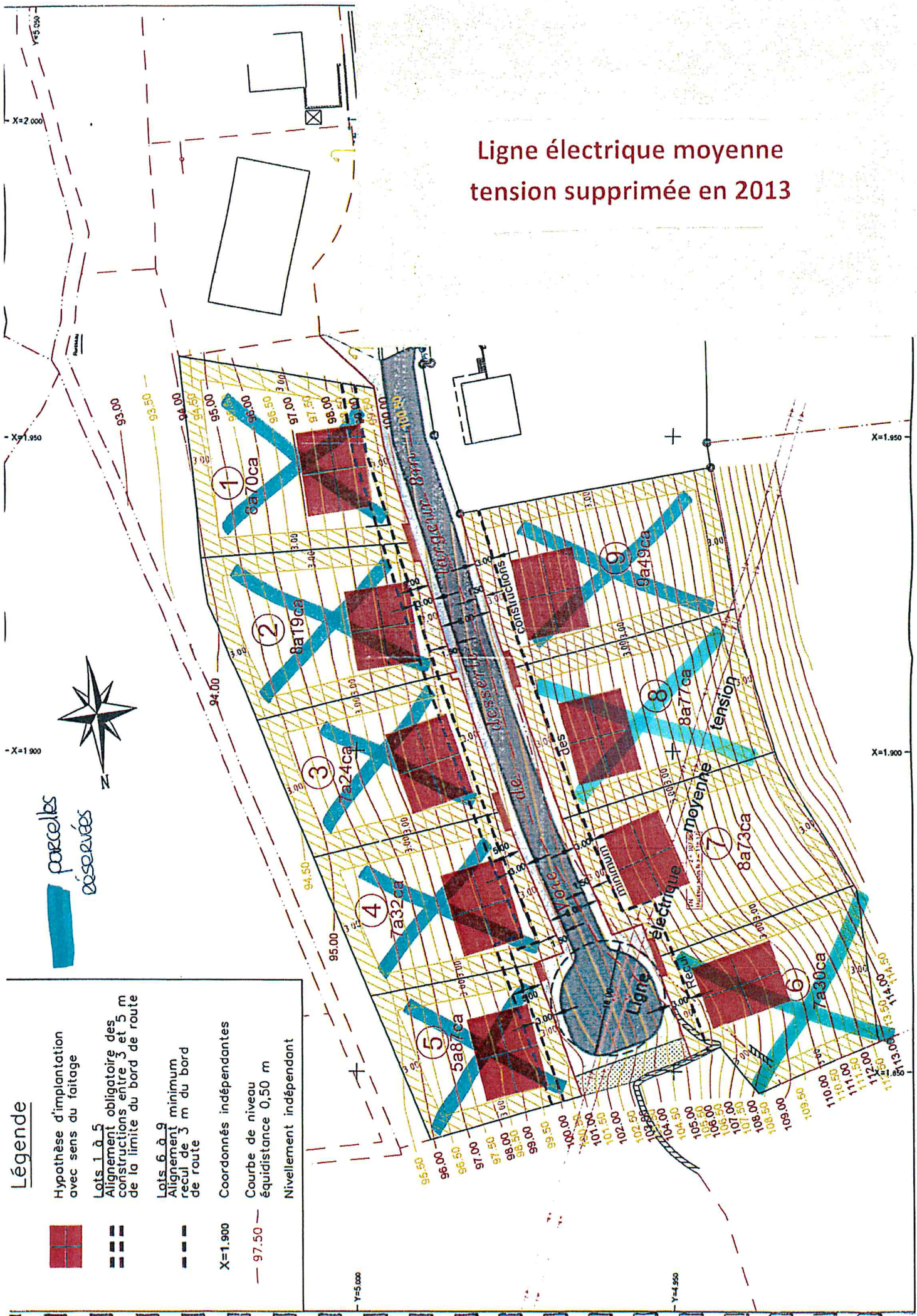



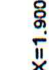






# Ligne électrique moyenne tension supprimée en 2013



## Légende

-  Hypothèse d'implantation avec sens du faitage
-  Lots 1 à 5
-  Alignement obligatoire des constructions entre 3 et 5 m de la limite du bord de route
-  Lots 6 à 9
-  Alignement minimum recul de 3 m du bord de route
-  Coordonnées indépendantes
-  Courbe de niveau équidistance 0,50 m
-  Nivellement indépendant

parcelles  
réservées



X=1.900

X=1.950

X=2.000

X=1.900

X=1.950

X=2.000

Y=5.000

Y=4.950

Y=4.900

Y=4.950

Y=5.000

Y=5.050

Y=5.100

Y=5.150

Y=5.200